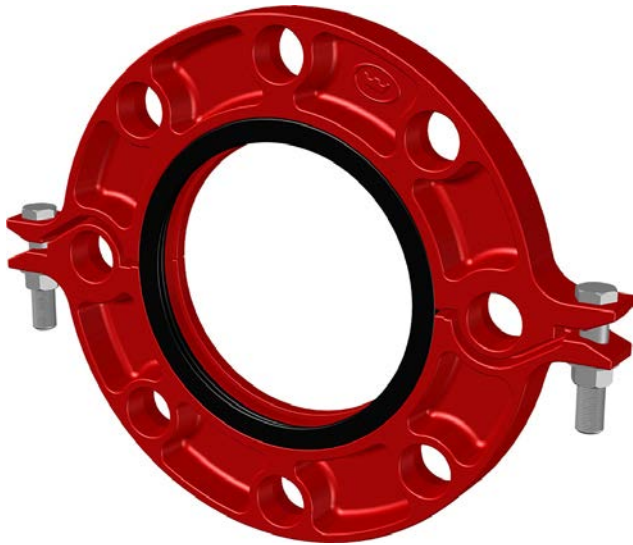




Grooved Products | Grooved Couplings | Split Flange ANSI | VK-SFA



SPECIFICATIONS

Sizes (Nominal)	2" to 10" DN50 to DN250
Approvals*	
Working pressure	12.1 bar (175 psi) to 20.7 bar (300 psi) (depending on size and approval)
Ambient temperature	-34 °C to 110 °C (-29.2 °F to 230 °F)
Material	Coupling: Ductile cast iron, ASTM A536 Grade 65-45-12 Gasket: EPDM Bolts and nuts: Quenched and tempered steel, ASTM A449
Finish	<ul style="list-style-type: none"> Painted red** Galvanised
Application	Water based fire-suppression systems
Installation	Refer to "Installation Manual"
Maintenance	Visual check

* Refer to table below for full approval listings

** Red epoxy available on request

Part numbers & technical data | VK-SFA

Nominal size		Pipe OD (mm)	Part number		Approvals		Max. working pressure* (psi / bar)	
Inch	DN		Painted red	Galvanised	UL	FM	UL	FM
2	50	60.3	VK-SFA-060P	VK-SFA-060G	▪	▪	300 / 20.7	300 / 20.7
2-1/2	65	73.0	VK-SFA-073P	VK-SFA-073G	▪	▪	300 / 20.7	300 / 20.7
3	80	88.9	VK-SFA-089P	VK-SFA-089G	▪	▪	300 / 20.7	300 / 20.7
4	100	114.3	VK-SFA-114P	VK-SFA-114G	▪	▪	300 / 20.7	300 / 20.7
5	125	141.3	VK-SFA-141P	VK-SFA-141G	▪	▪	300 / 20.7	300 / 20.7
6	150	168.3	VK-SFA-168P	VK-SFA-168G	▪	▪	300 / 20.7	300 / 20.7
8	200	219.1	VK-SFA-219P	VK-SFA-219G	▪	▪	300 / 20.7	300 / 20.7
10	250	273.0	VK-SFA-273P	VK-SFA-273G	▪	-	175 / 12.1	-

* Maximum working pressure for Schedule 40 pipe

Note: This document contains basic product information only. Information, photos and drawings are not contractually binding. In all cases, the manufacturer's full technical documentation remains the reference document. Note that certificates, test reports and approvals may be published in the OEM name.

The contents of this publication are subject to modifications without notice. All rights reserved.

Fireking™ is a trademark of The Viking Corporation.

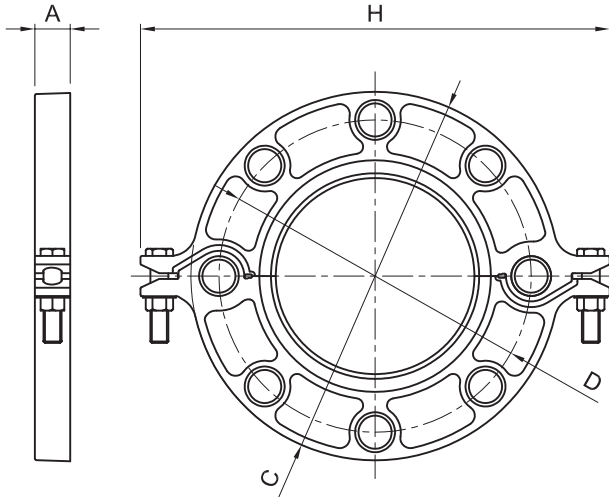
Trusted above all.

Viking S.A. (ed.) | 21, Z.I. Haneboesch | L-4562 Differdange/Niederborn | Luxembourg | vikinglux@viking-emea.com | www.viking-emea.com



Grooved Products | Grooved Couplings | Split Flange ANSI | VK-SFA

Dimensional drawing



Dimensions | VK-SFA

Inch	DN	Pipe OD (mm)	H (mm)	A (mm)	C (mm)	D (mm)	Bolts-Nuts	Weight (kg)
2	50	60.3	215	23.0	155	120.5	4 x M16	1.8
2-1/2	65	73.0	238	23.0	182	139.5	4 x M16	2.3
3	80	88.9	253	23.0	192	152.5	4 x M16	2.4
4	100	114.3	282	24.0	230	190.5	8 x M16	3.0
5	125	141.3	324	24.5	256	216.0	8 x M20	3.8
6	150	168.3	345	24.5	284	241.5	8 x M20	3.9
8	200	219.1	414	28.0	345	298.5	8 x M20	6.2
10	250	273.0	500	30.0	406	362.0	12 x M24	9.5

Note: This document contains basic product information only. Information, photos and drawings are not contractually binding. In all cases, the manufacturer's full technical documentation remains the reference document. Note that certificates, test reports and approvals may be published in the OEM name. The contents of this publication are subject to modifications without notice. All rights reserved. Fireking™ is a trademark of The Viking Corporation.

Trusted above all.

Viking S.A. (ed.) | 21, Z.I. Haneboesch | L-4562 Differdange/Niederborn | Luxembourg | vikinglux@viking-emea.com | www.viking-emea.com

